

CRAWFORD

Lachlan façade



Cooper façade



Flinders façade



Barrington façade



Manning façade



Nepean façade



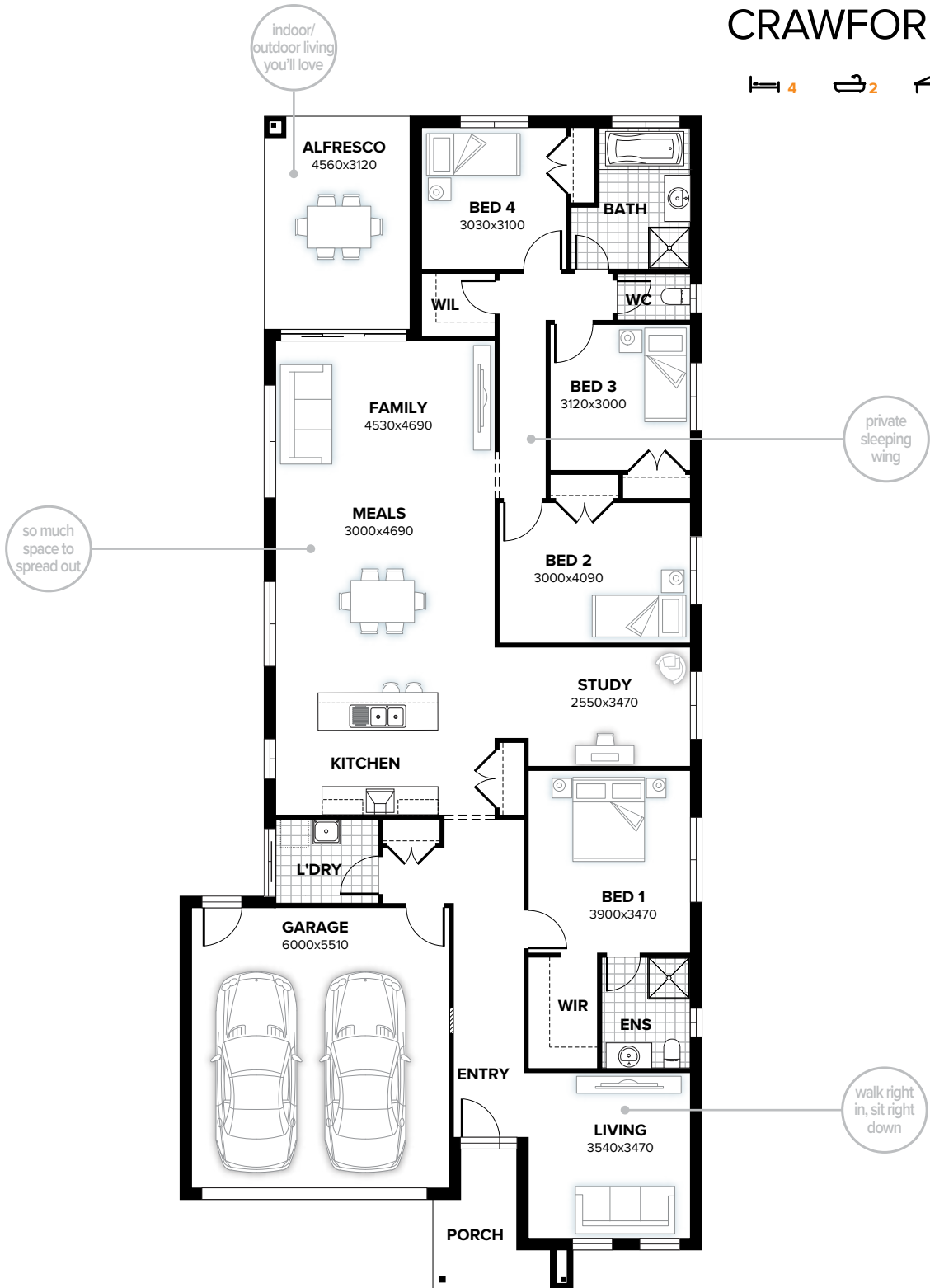
Bowman façade



All façade images are artist's impressions only. These images may contain internal or external upgrade items such as feature renders and timber look garage doors. Images contain items not supplied by Burbank, which include furniture, landscaping, fencing and external lighting. See your New Home Consultant for full specifications.

CRAWFORD 237

4 2 1 2



FLOORPLAN OPTIONS

Want to put a personal touch on your home? Speak to your New Home Consultant about the exciting range of ready-to-go design options for this floorplan.

Popular design options include:

- Kitchen options
- Kids activity room option
- Relocate living room
- Storage and workshop options
- Triple car garage option
- Modified porch to front

home width	11.15m
home length	25.07m

residence	180.31sqm	19.41sq
alfresco	14.22sqm	1.53sq
porch	5.76sqm	0.62sq
garage	36.51sqm	3.93sq
total	236.80sqm	25.49sq

Listed details based on Lachlan façade floorplan (illustrated)

Call 13 BURBANK Visit burbank.com.au

Burbank 
#noplacelikehome

*Copyright conditions. All photos and illustrations are representative only. Floor plans and specifications may be varied by Burbank without notice, the dimensions are diagrammatic only and a Building Contract with final drawings will display correct dimensions and detail. All designs are the property of Burbank and must not be used, reproduced, copied or varied, wholly or in part without written permission from an authorised Burbank representative. Copyright Burbank Australia (NSW) Pty Ltd. ABN 88 610 822 870. NSW BL 295627C. ACT BL 2016566.

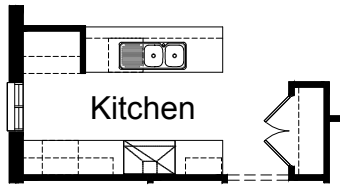
FLOORPLAN OPTIONS

CRAWFORD 237



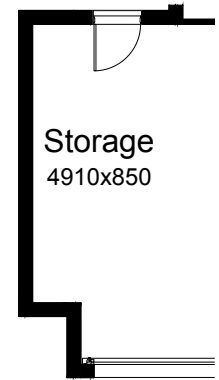
OPTION K1

Provide Kitchen upgrade with 2no. 800mm base cupboards, 1no. laminated MW provision with pot drawer below, 1no. 300mm base cupboard, 1no. 900mm upright cooker with 900mm canopy range hood above, 3no. 600mm overhead cupboards, 1no. 300mm laminated overhead open shelves, 1no. laminated open shelf above refrigerator space, 1no. 350mm base cupboard, 1no. laminated DW provision, 1no. 900mm base cupboard and 1no. 450mm drawers with additional bench top and tiled splash back to suit.



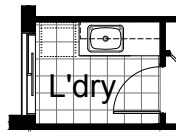
OPTION G1

Provide extension to Garage to create additional Storage area. Increases area by 4.58m². Increases width by 850mm



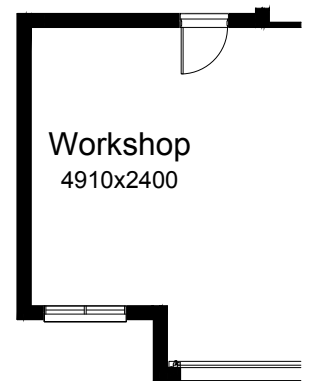
OPTION LD1

Provide Laundry upgrade with laminated insert trough, 1no. 900mm base cupboard, 1no. 450mm base cupboard, 1no. 900mm overhead cupboard, 1no. 450mm overhead cupboard and additional tiled splash back and bench top to suit.



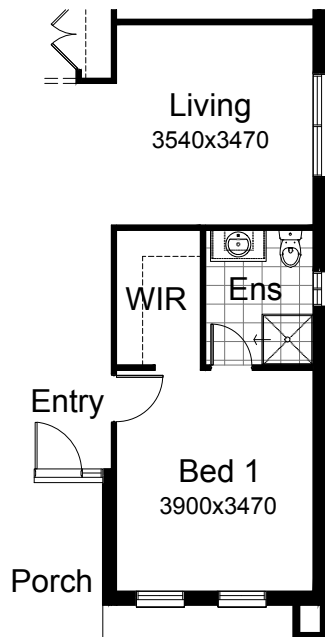
OPTION G2

Provide extension to Garage to create Workshop area including additional window to suit. Increases length by 2400mm. Increases area by 12.93m².



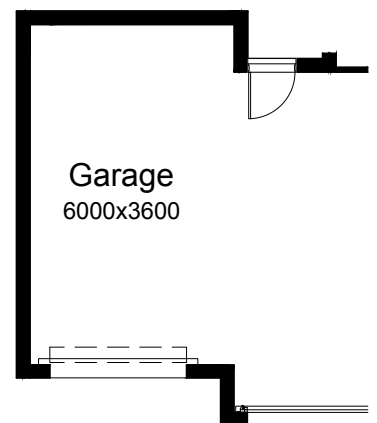
OPTION IP1

Relocate Living with Bed 1, Ensuite and WIR.



OPTION G3

Provide triple car Garage including additional roller door to front. Increases area by 23.69m². Increases width by 3600mm.



Call 13 BURBANK Visit burbank.com.au

Burbank 
#noplacelikehome

*Copyright conditions. All photos and illustrations are representative only. Floor plans and specifications may be varied by Burbank without notice, the dimensions are diagrammatic only and a Building Contract with final drawings will display correct dimensions and detail. All designs are the property of Burbank and must not be used, reproduced, copied or varied, wholly or in part without written permission from an authorised Burbank representative. Copyright Burbank Australia (NSW) Pty Ltd. ABN 88 610 822 870. NSW BL 295627C. ACT BL 2016566.

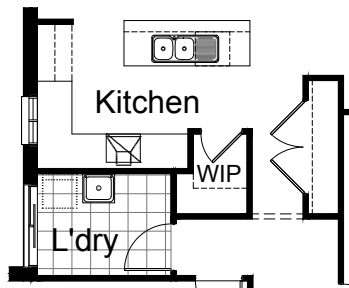
FLOORPLAN OPTIONS

CRAWFORD 237



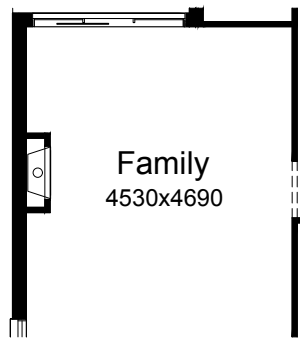
OPTION K2

Provide Kitchen and WIP Option by increasing Laundry width by 160mm, delete Linen cupboard, 2no. 520mm flush panel hinged doors and 3no. shelves, reduce L'dry passage by 200mm and provide site build plaster lined WIP with 3no. 300mm deep shelves, 3no. 450mm deep shelves, and 1no. 720mm flush panel hinged door. Decrease Kitchen opening/Bulkhead width by 190mm to 900mm in lieu of standard 1090mm. Provide 2no. 400mm base cupboards, 2no. 800mm base cupboard, 1no. laminated DW provision, 1no. 300mm base cupboard, 1no. laminated open shelf above refrigerator space, 1no. 450mm drawers, 1no. 1050mm blind carcass with 1no. 600mm door, 1no. 600mm under bench oven with 1no. 600mm wide canopy range hood, 2no. 600mm overhead cupboard, 1no. 300mm overhead cupboard and 1no. 1200mm x 850mm aluminium sliding window with additional tiled splash back and bench top to suit. Rename Pantry cupboard into Linen cupboard and extend by 800mm and provide 2no. 820mm flush panel hinged doors in lieu of standard.



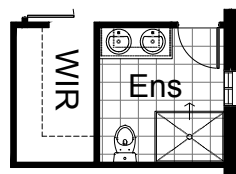
OPTION IP3

Provide Jetmaster SL-350 gas fireplace, 400mm off floor level in a 1400mm x 420mm boxed out plaster wall with a 4 sided black fascia to Family room side wall and delete 1no. 514mm x 2410mm aluminium sliding window to Family.



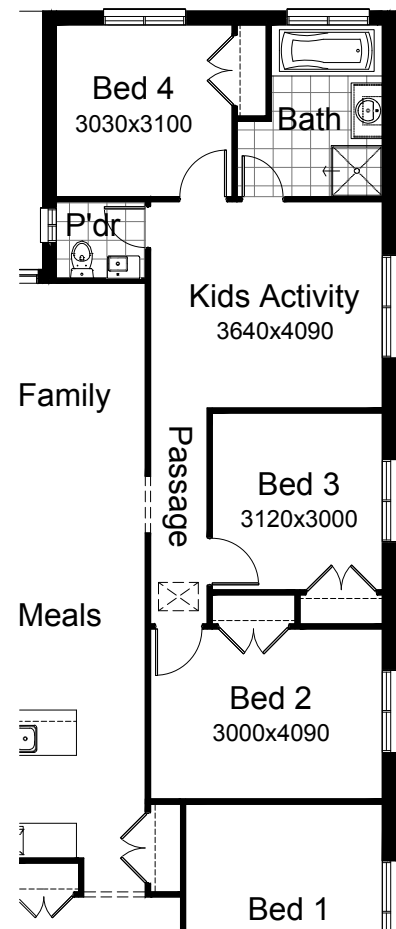
OPTION ENS1

Provide Ensuite Option with additional 1no. 1200mm x 900mm tiled shower base in lieu of standard, 1no. 1282mm wide vanity unit with 2no. basins in lieu of standard and increase Ensuite width by 300mm and decrease WIR width by 100mm and decrease Entry width by 200mm.



OPTION IP2

Provide Kids Activity with additional 1no. 1200mm x 1810mm aluminium sliding window in lieu of Study and relocate Pantry, Bed 2, Bed 3 and Passage opening to suit. Delete WIL and provide additional Powder room in lieu of standard WC including an additional wall hung basin.



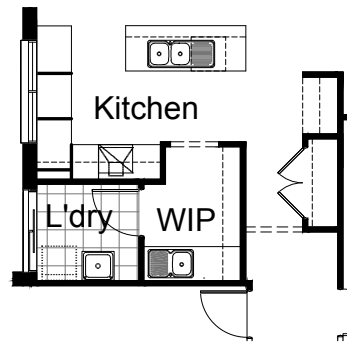
Call 13 BURBANK Visit burbank.com.au

Burbank 
#noplacelikehome

*Copyright conditions. All photos and illustrations are representative only. Floor plans and specifications may be varied by Burbank without notice, the dimensions are diagrammatic only and a Building Contract with final drawings will display correct dimensions and detail. All designs are the property of Burbank and must not be used, reproduced, copied or varied, wholly or in part without written permission from an authorised Burbank representative. Copyright Burbank Australia (NSW) Pty Ltd. ABN 88 610 822 870. NSW BL 295627C. ACT BL 2016566.

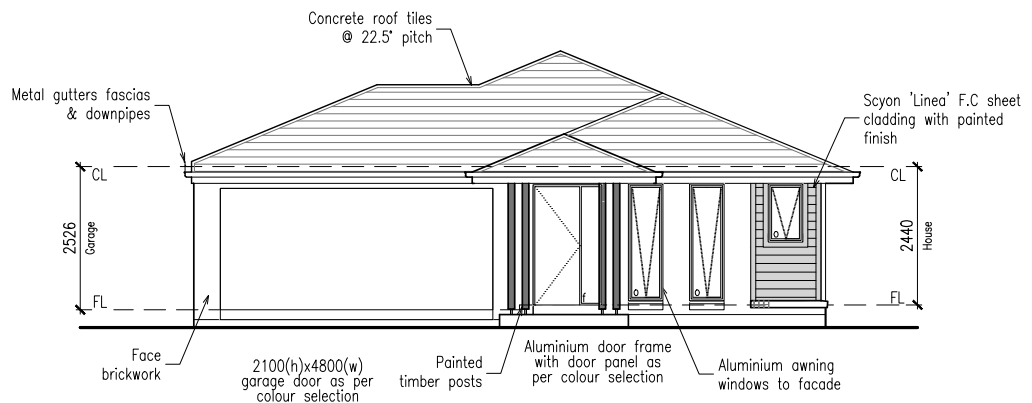
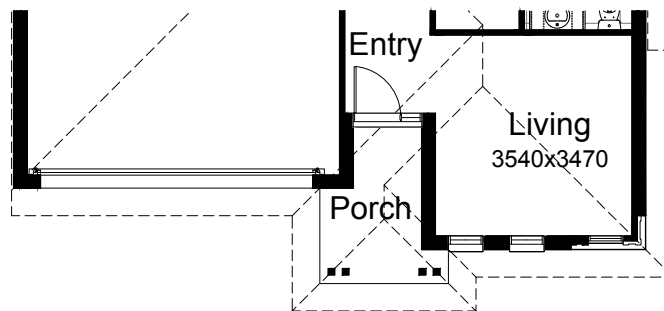
OPTION K3

Provide option upgrade with 'L' shaped Kitchen, Butlers Pantry and walk through Laundry. Provide 1no. laminated open shelf above refrigerator space, 2no. 300mm base cupboards, 1no. 800mm base cupboards, 1no. DW provision, 1no. 1050mm blind carcass with 2no. 300mm doors, 1no. 600mm base cupboard, 1no. 400mm base cupboard, 1no. 450mm drawers, 2no. 450mm base cupboards, 1no. 400mm overhead cupboard, 1no. 900mm overhead cupboard, 1no. 600mm under bench oven with 1no. 600 canopy range hood, 1no. 1200mm x 1800mm aluminium sliding window in lieu of standard 1no. 1800mm x 850mm sliding window, additional tiles splash back and bench top to Kitchen. Provide additional 1no. 400mm base cupboard, 1no. 900mm base cupboard, 1800mm high open adjustable shelves, 1no. single bowl sink with drainer and tiled splash back and bench top to suit.



OPTION EP1

Provide Modified Porch to Barrington Facade by increasing Porch depth by 600mm and providing additional 2no. painted timber posts to suit.
 Note: Increases Porch area to 4.61m² in lieu of standard 3.25m².



Barrington facade